

UEI: E6M1RA2QXMH5  
DUNS: 143331135  
Cage Code: 3RLV5  
Woman Owned Business  
Minority Owned Business  
Small Business  
OMWBE M5F0024588



ESTABLISHED SINCE 2004

CAPABILITY STATEMENT/LINE CARD

## *"If You Need It, We Can Find It!"*

### PURCHASE AGENTS/SUPPLIERS:

- Purchase/supplier of supplies, parts, equipment, material and services.
- Verifies purchase requisitions by comparing items requested to current market availability. Locates alternatives if necessary.
- Research hard-to-find or discontinued items for availability or replacement.
- Verifies specifications and finds lowest price available.
- Coordinates orders to suppliers; monitoring and arranging delivery.
- Coordinates/provides installation/repairs for parts.
- Serves as a local representative/supplier of many major products.

### ESTABLISHED WORKING RELATIONSHIPS WITH ...

- ✓ BAE Systems
- ✓ Bechtel National
- ✓ DLA Puget Sound
- ✓ General Dynamics NASSCO
- ✓ Naval Information Warfare Center Pacific
- ✓ Naval Ship Repair Facility – Diego Garcia
- ✓ Naval Ship Repair Facility – JRMC Sasebo Japan
- ✓ Naval Ship Repair Facility – JRMC Yokosuka Japan
- ✓ Naval Supply Systems Command Fleet Logistics Center Pearl Harbor
- ✓ Naval Supply Systems Command Fleet Logistics Center Puget Sound
- ✓ Naval Supply Systems Command Fleet Logistics Center San Diego
- ✓ NOVA Group INC.
- ✓ Washington State Department of Corrections

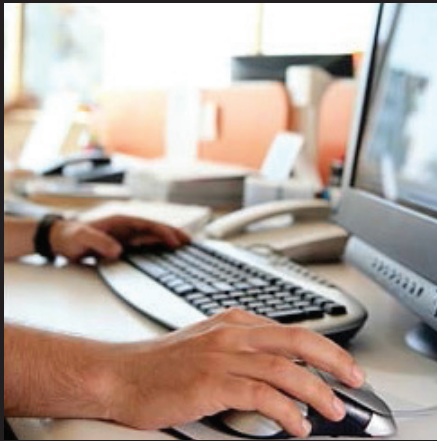
KLB Enterprises is a value-added retail distributor serving a wide range of clients spanning different verticals including the Government, Education, and Corporate markets. We are dedicated to customer service!

WE ACCEPT VISA AND MASTER CARD

**Lydia Wilson**  
President & CEO  
Phone: 360-479-0552  
Email: [lydia@klb-enterprises.com](mailto:lydia@klb-enterprises.com)

**KLB Enterprises**  
6018 Pahrman PL NW  
Bremerton, WA 98311

**Keith Wilson**  
Project Manager  
Phone: 360-479-0552  
Email: [keith@klb-enterprises.com](mailto:keith@klb-enterprises.com)



## EXAMPLES OF PRODUCTS REQUESTED AND DELIVERED...

Appliances	Drill Bits Counterbores/ Countersinks	Hardware Commercial
Bearings	Drive Belts	Hose and Flexible Tubing
Blocks/Tackle/Rigging	Electric Arc Welding Equipment	Indoor/Outdoor Lighting
Bolts/Nuts/Washers	Electrical Vehicular Lights and Fixtures	Insulation, Pipe
Boxes/Cartons/Crates	Electrical and Electronic Assemblies/Boards/Cards	Kitchen Equipment and Appliances
Brackets	Electrical Control Equipment	Laboratory Equipment
Brooms/Mops/Sponges	Engine Cooling System Components	Laundry Appliances
Building Components	Engine Air and Oil Filters/Strainers/Cleaners	Locks
Cabinets/Lockers/Bins/ Shelving	Engine Instruments	Lockers
Cameras	Fans/Air Circulators and Blower Equipment	Manual Presses
Capacitors	Fastening Devices	Maps/Atlases/Globes
Carts-Hand Trucks	Fencing	Mechanical Presses Power Driven
Chain and Wire Rope	Fiber Optic Cables	Mechanical Parts
Circuit Breakers	Fittings for Rope/Cable/Chain	Miscellaneous Computer Accessories
Coils and Transformers	Flags and Pennants	Misc. Air Conditioning Equipment
Compressors	Floor Coverings	Miscellaneous Rigging Supplies
Computer Accessories	Floor Polishers/Vacuum Cleaning Equipment	Office Equipment and Supplies
Computer Equipment	Footwear for Men & Women	Safety Supplies
Conex Boxes	Gardening Implements and Tools	Shelving
Connectors, Electrical Furniture	Gas Welding/Cutting Equipment	Specialty Tools and Hardware
Cutting/Forming Tools	Gaskets	Steel Strapping
Diesel Engines and Components	Gears/Pulleys/Sprockets and Transmission Chain	Tool Boxes
Drafting/Surveying/ Mapping Instruments	Generators and Generator Sets	Welding Equipment



**Lydia Wilson**  
President & CEO  
Phone: 360-479-0552  
Email: [lydia@klb-enterprises.com](mailto:lydia@klb-enterprises.com)

**KLB Enterprises**  
6018 Pahrman PL NW  
Bremerton, WA 98311

**Keith Wilson**  
Project Manager  
Phone: 360-479-0552  
Email: [keith@klb-enterprises.com](mailto:keith@klb-enterprises.com)